



LINKSYS[®] by Cisco

Wireless-N Internet Home Monitoring Camera



Package Contents

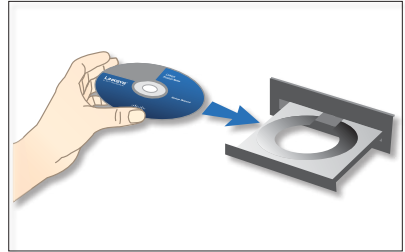
- Wireless-N Internet Home Monitoring Camera
- Camera stand/wallmount
- Setup software and User Guide on CD-ROM
- Quick Installation Guide
- Network cable
- Power adapter

Quick Installation Guide

Model: WVC80N

Installation

- A. Insert the Setup CD-ROM into your CD-ROM drive.



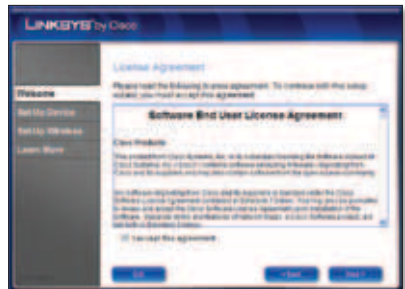
- B. Click **Start Setup**, then click **Next**.



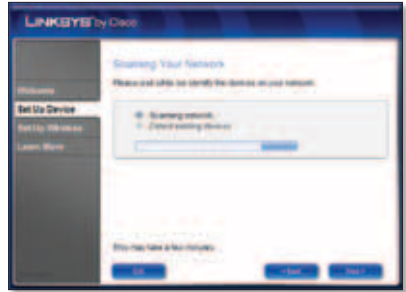
- C. Click **Next**.



- D. Select **I accept this agreement**, then click **Next**.



E. Please wait while the Wizard identifies the devices on your network. When it has finished, click **Next**.



F. Follow the on-screen instructions to connect the Camera.



G. Please wait while the Wizard searches for the Camera.

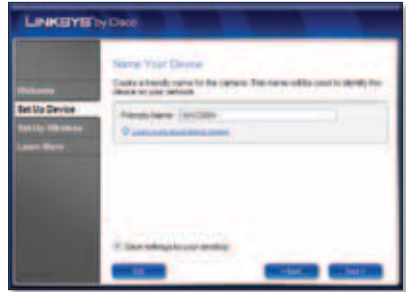


H. Enter a username and password for the Camera. The username and password may only contain letters, numbers, or the underscore (_) character. When you have finished, click **Next**.

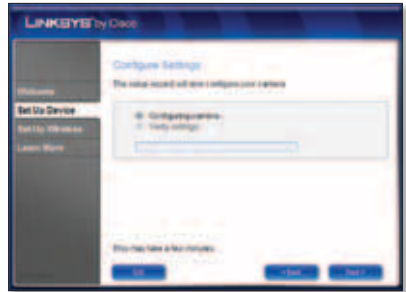


- I. Choose a descriptive name for your camera and enter it in the *Friendly Name* field.

If you would like to save the Camera's settings to a text file on your desktop, select **Save settings to your desktop**. Click **Next**.



- J. Please wait while the Wizard configures your settings.



- K. The Wizard now guides you through the wireless setup. Click **Next**.

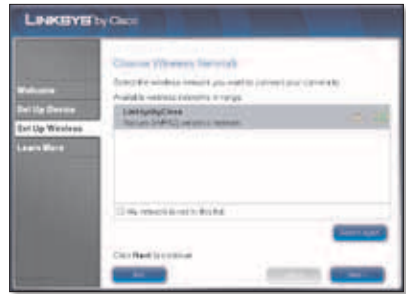


- L. If the wizard is able to automatically retrieve your router's settings, you will see this screen. If you would like to use this network, click **Next** and go to Step O.

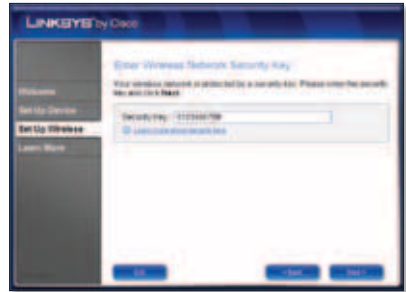
If you do not see this screen, or you would like to connect to a different network, select **I would like to connect to a different network** and click **Next**. Go to step M.



M. The Wizard searches for available wireless networks. When it has finished, select your wireless network and click **Next**.

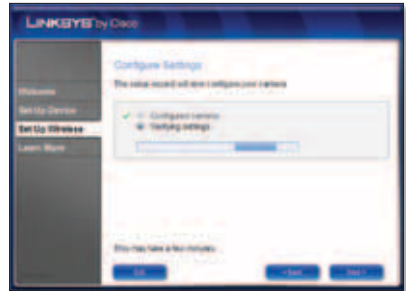


N. If your network uses wireless security, the *Enter Wireless Network Security Key* screen appears. Enter your password in the *Security Key* field and click **Next**.



If your network does not use wireless security, go to step O.

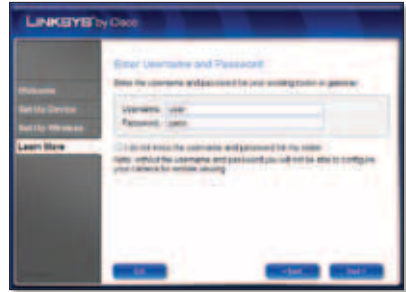
O. Please wait while the Wizard configures your network.



P. Follow the on-screen instructions to disconnect the cables from the Camera.



- Q. Enter your router's username and password and click **Next**.



Congratulations! The Camera installation is complete.

To set up your Camera for remote viewing over the Internet, continue to "Remote Access Setup" below.

Remote Access Setup

Using the TZO DDNS Service, you can access the Camera from anywhere on the Internet by using the Camera's domain name. To set up your TZO account, follow these instructions.

- A. To begin the TZO signup process, click **Next**. Go to step B.

To skip the TZO signup process, select **No, thanks** and click **Next**. Go to step H.



- B. Click **Next**.



- C. If you are setting up a new TZO account, select **I would like to create a new TZO DDNS domain name...** and click **Next**. Go to step D.

If you already have a TZO account, select **No thanks, I have an existing TZO DDNS domain name...** and click **Next**. Go to step F.

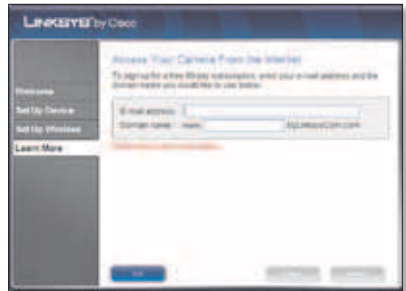
- D. Enter your email address and your desired domain name, then click **Next**.

The Wizard connects your Camera to the internet.

- E. Your TZO account sign up is complete. An email is sent to you with your account information.

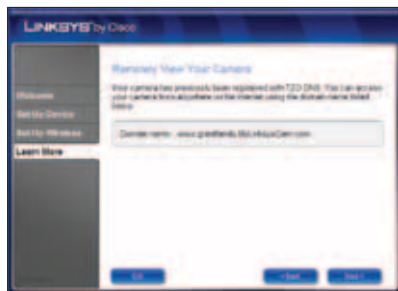
Click **Next**. Go to step H.

- F. Enter your current TZO domain name and click **Next**.



- G.** Your TZO account setup is complete.

Click **Next**.



- H.** The Camera setup is complete.

Click **Finish**.



**Congratulations! Your TZO account setup is complete.
Refer to the User Guide for instructions on configuring the Web-based Utility.**

For additional information or troubleshooting help, refer to the User Guide on the CD-ROM. Additional support is also available by phone or online.

24-Hour Technical Support
800-326-7114

Website
<http://www.linksysbycisco.com>

RMA (Return Merchandise Authorization)
<http://www.linksysbycisco.com/warranty>

Support
<http://www.linksysbycisco.com/support>

© 2009 Cisco Systems, Inc. All rights reserved. Cisco, the Cisco logo, and Linksys are trademarks or registered trademarks of Cisco Systems, Inc. and/or its affiliates in the United States and certain other countries. All other trademarks mentioned in this document or website are the property of their respective owners. The use of the word partner does not imply a partnership relationship between Cisco and any other company.